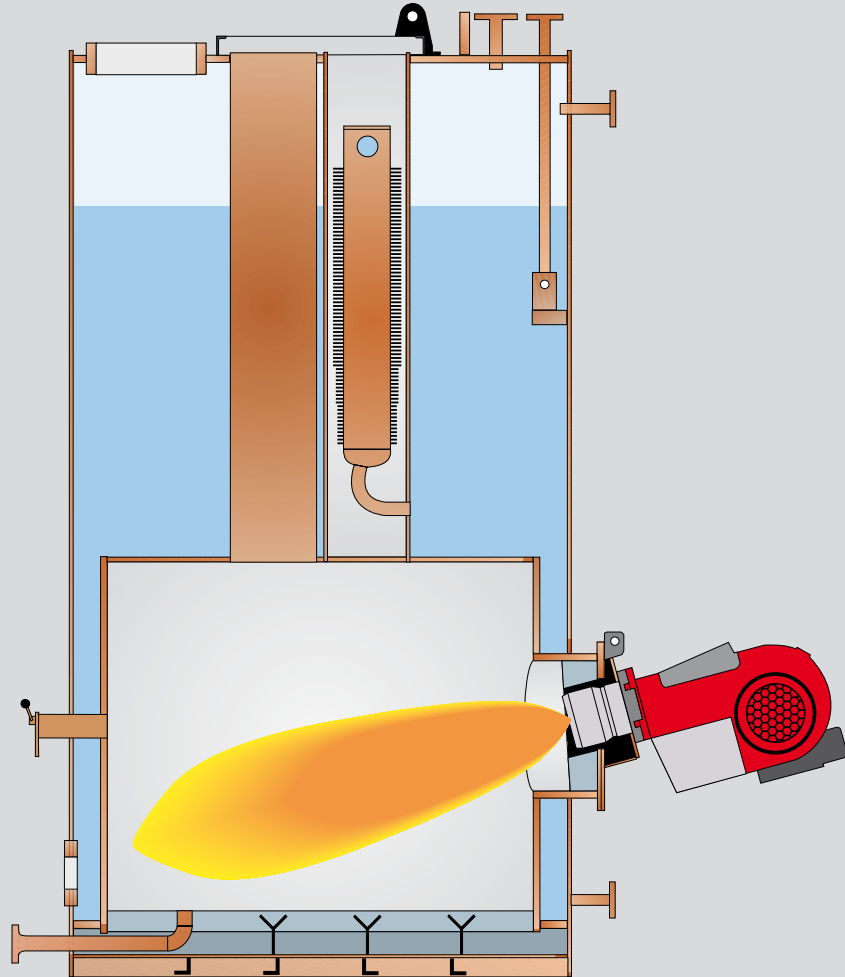
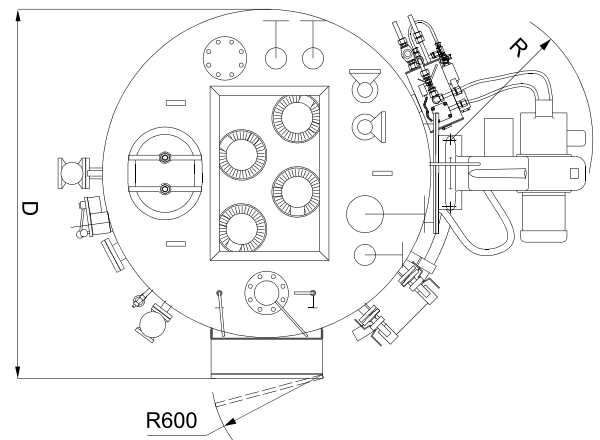
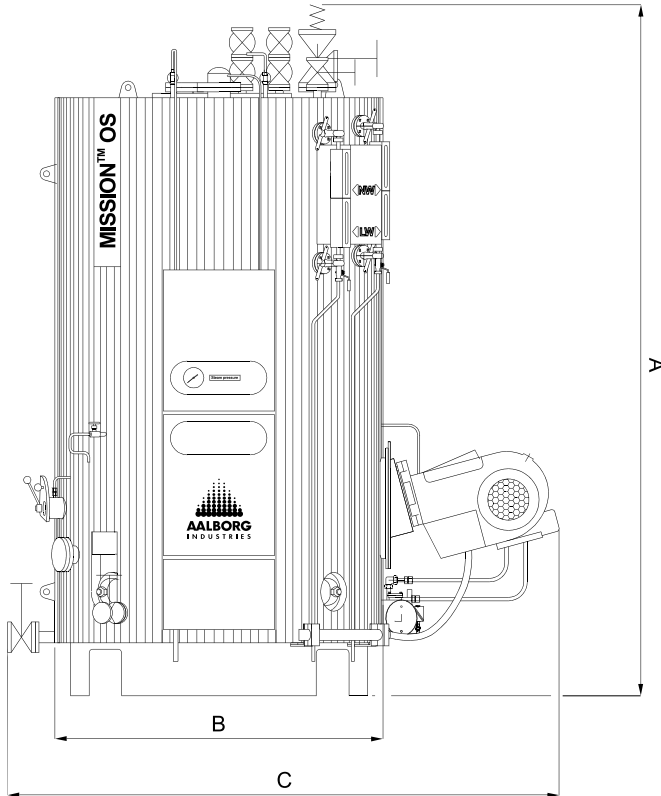


MISSION™ OS



The MISSION™ OS is supplied as a standard, preassembled boiler unit. High performance is ensured by the use of the optimally designed pin tube elements. These elements are also used for support of the top plates of the furnace and boiler. The inclined mounting of the burner provides good combustion with all grades.

Capacity range: 1,600–6,500 kg/h
Thermal output: up to 4.6 MW



STANDARD PRODUCT RANGE

Capacity and dimensions

| Steam capacity | Design pressure | Outside dimensions (incl. insulation) | | | | | Boiler dry weight | Boiler operation weight |
|----------------|-----------------|---------------------------------------|-------|-------|-------|-------|-------------------|-------------------------|
| | | A | B | C | D | R | | |
| kg/h | bar (g) | mm | mm | mm | mm | mm | ton | ton |
| 1,600 | 10 | 3,725 (4,530) | 1,770 | 2,980 | 1,990 | 760 | 4.5 (5.1) | 7.0 (9.0) |
| 2,300 | 10 | 3,925 (4,625) | 1,970 | 3,185 | 2,190 | 760 | 6.2 (6.9) | 9.2 (11.4) |
| 2,500 | 10 | 3,925 (4,740) | 1,970 | 3,360 | 2,190 | 1,075 | 6.2 (7.0) | 9.2 (11.7) |
| 3,300 | 10 | 4,510 (5,120) | 2,170 | 3,585 | 2,580 | 1,075 | 8.3 (9.0) | 12.3 (14.6) |
| 4,000 | 10 | 4,510 (5,345) | 2,170 | 3,530 | 2,580 | 1,075 | 8.3 (9.3) | 12.3 (15.4) |
| 5,400 | 10 | 5,170 (5,910) | 2,470 | 3,850 | 2,880 | 1,075 | 11.3 (12.5) | 17.2 (20.7) |
| 6,500 | 10 | 5,170 (6,135) | 2,470 | 4,100 | 2,880 | 1,260 | 11.3 (12.8) | 17.2 (21.8) |

The dimensions are valid for DNV, LRS (GL, SeeBG)